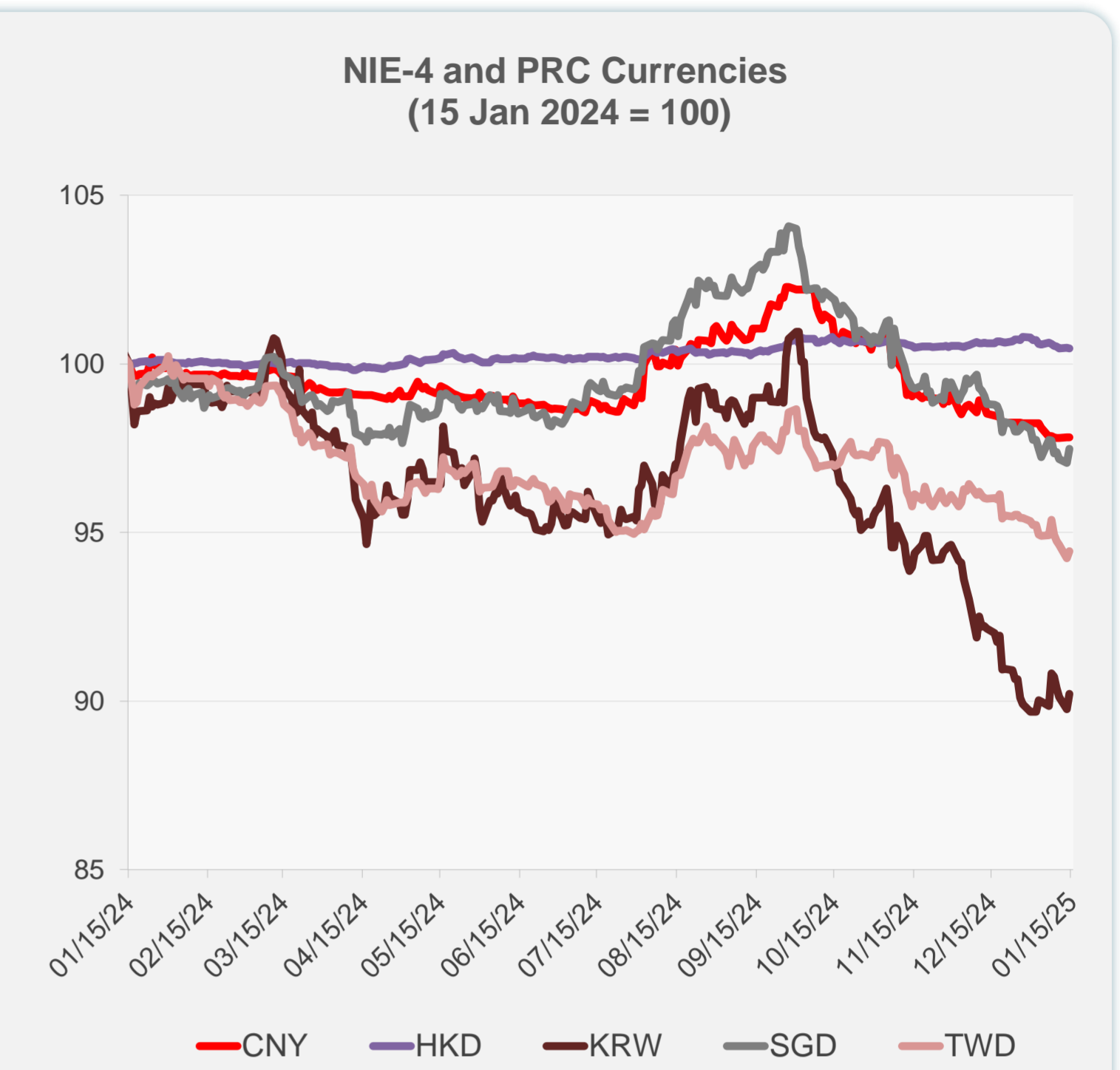
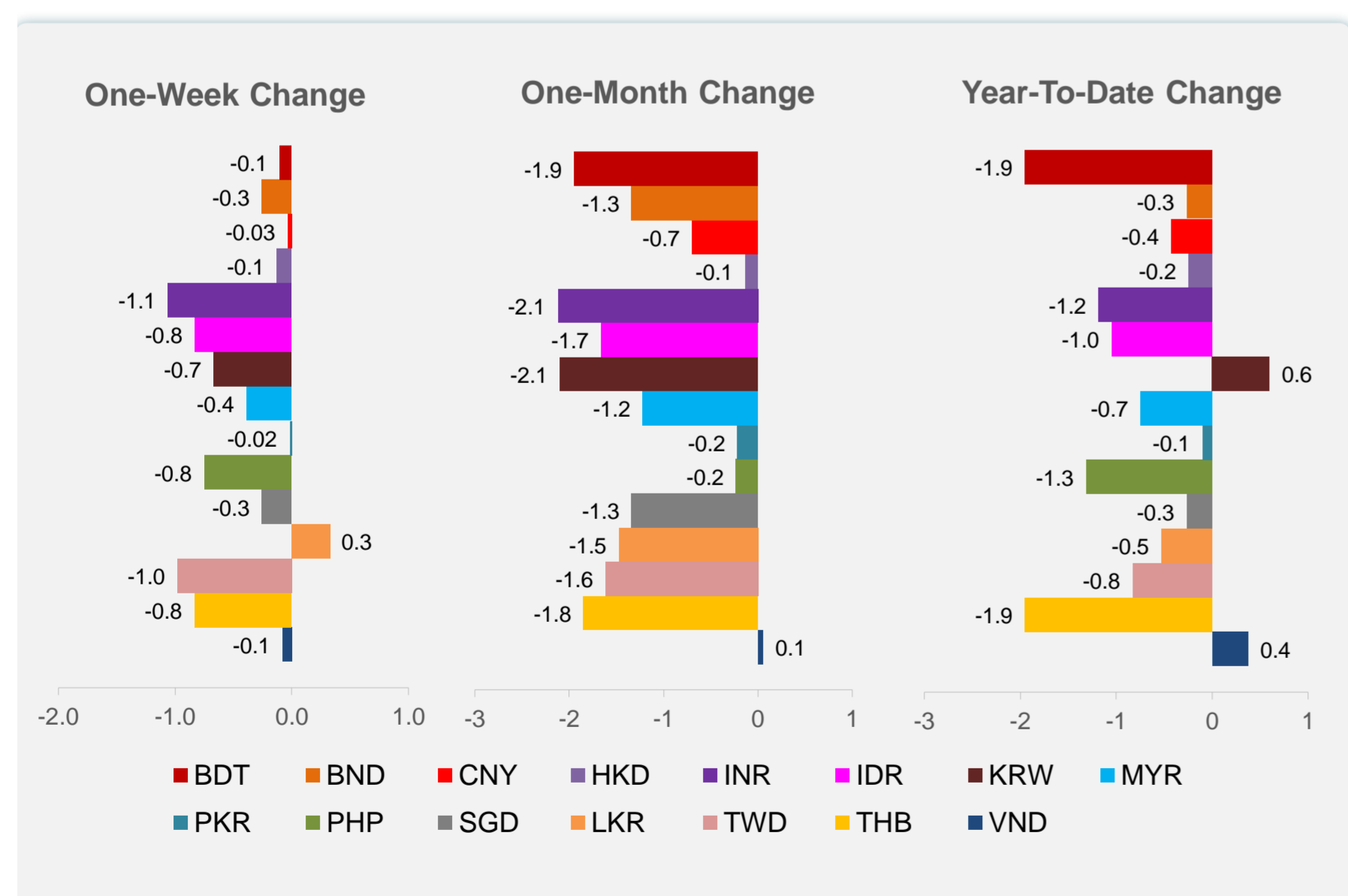
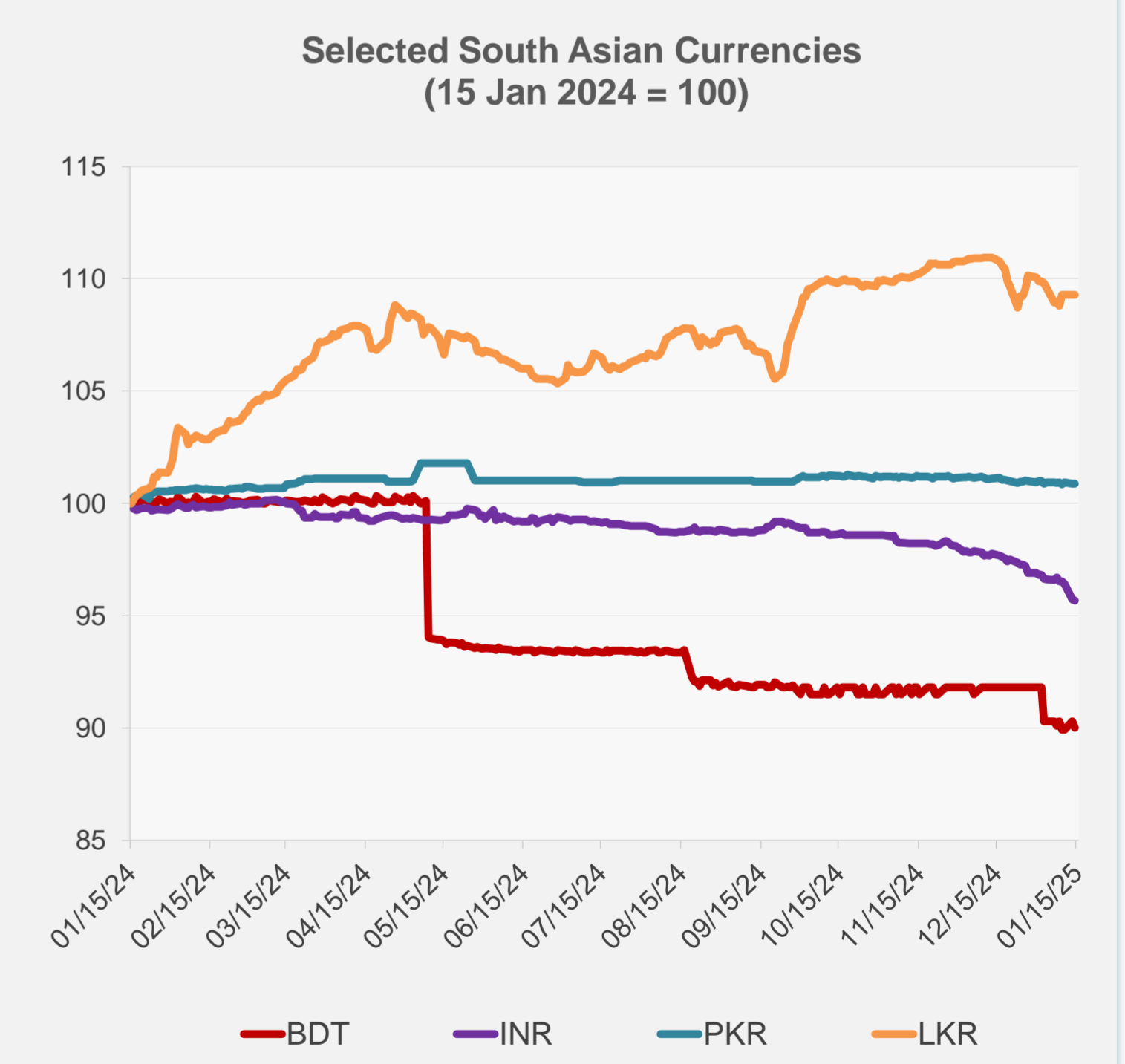
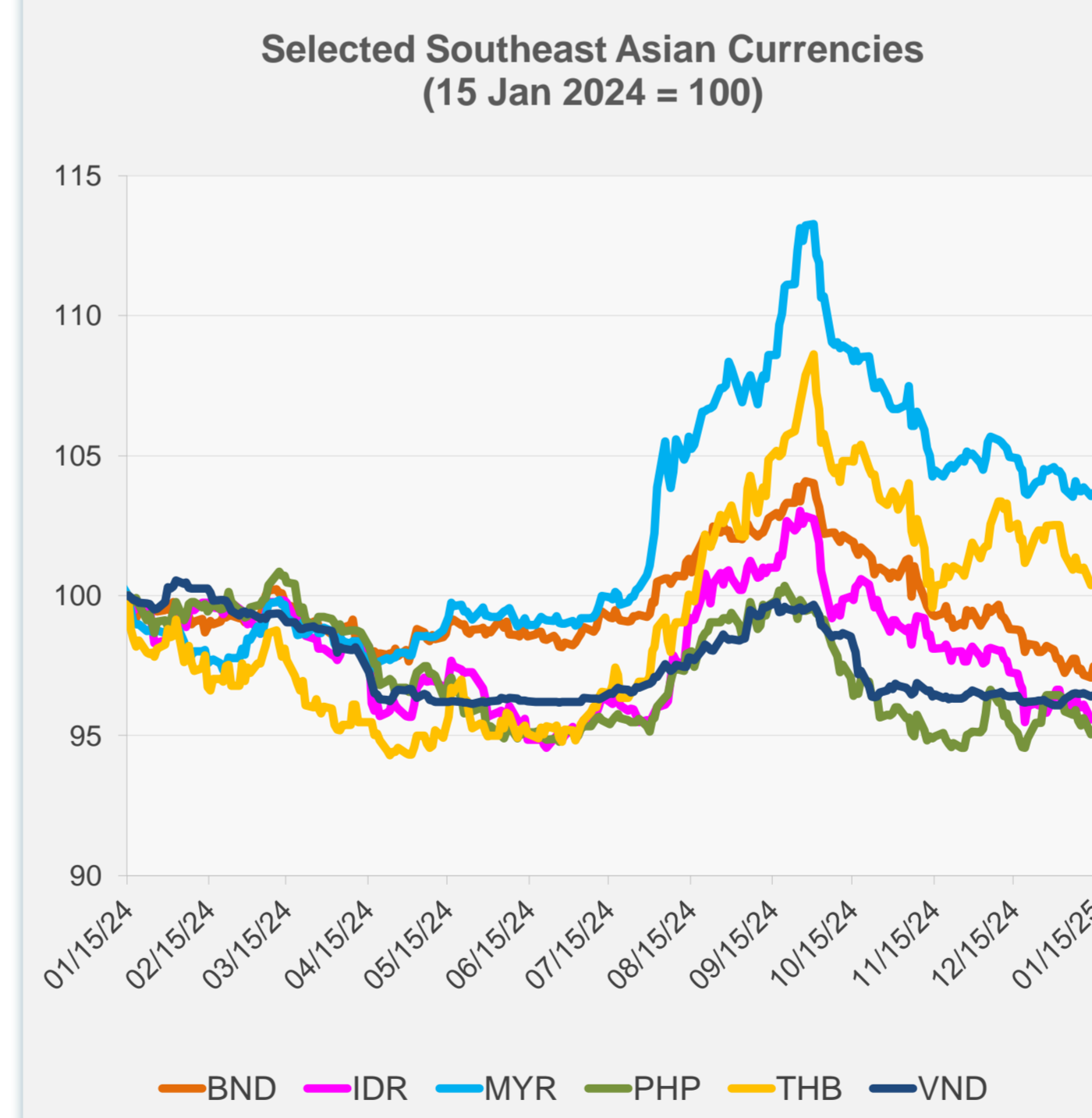


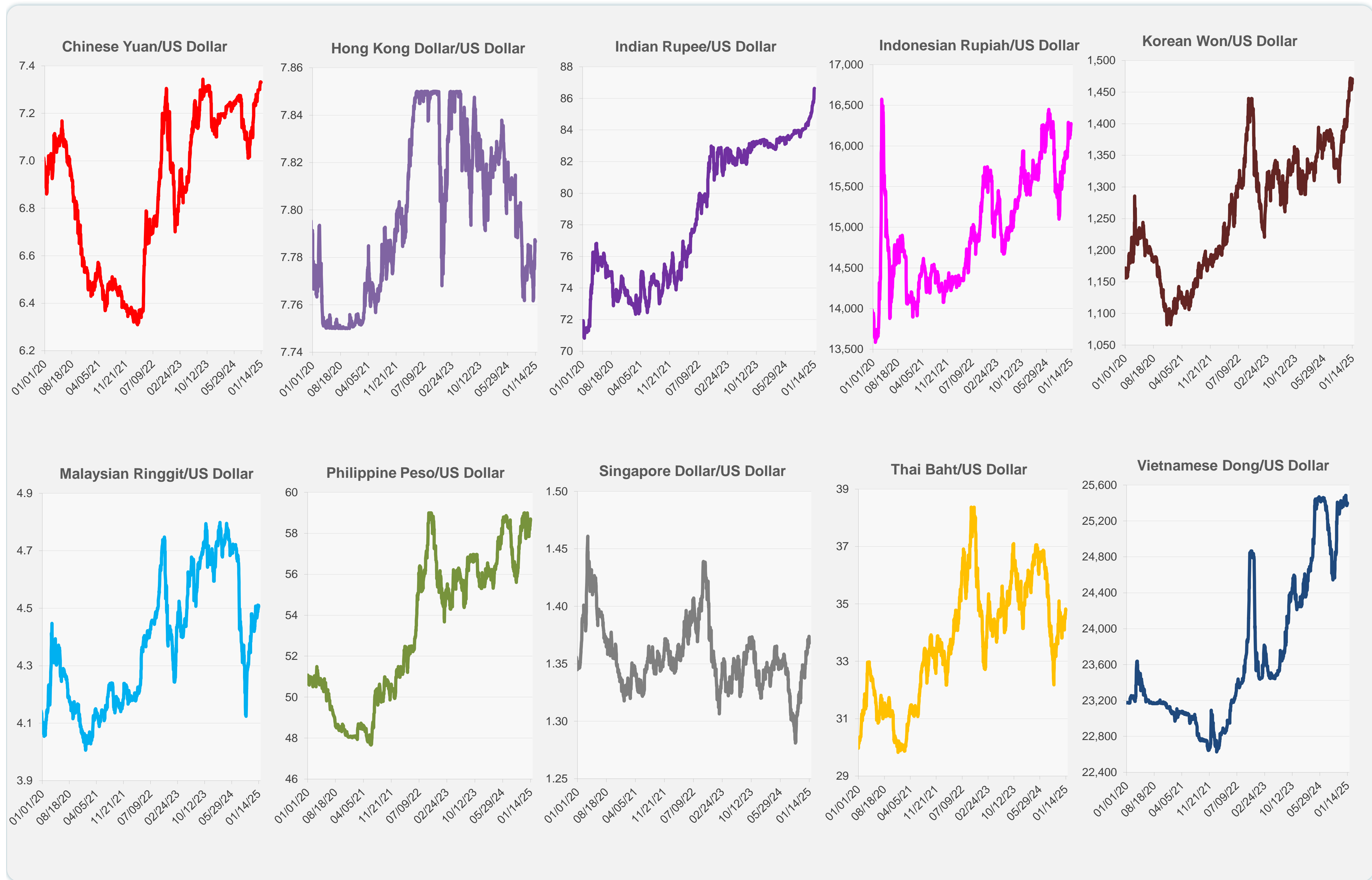
	Latest Closing	% change from Previous Day	% change from 01-Jan-25
Euro	0.97	0.96	-0.59
Japanese yen (JPY)	157.95	-0.27	-0.50
Bangladeshi taka (BDT)	121.88	-0.31	-1.95
Brunei dollar (BND)	1.37	0.44	-0.26
Chinese yuan (CNY)	7.33	0.02	-0.42
Hong Kong dollar (HKD)	7.79	0.00	-0.24
Indian rupee (INR)	86.64	-0.06	-1.18
Indonesian rupiah (IDR)	16,265.00	0.06	-1.05
Korean won (KRW)	1,463.40	0.51	0.60
Malaysian ringgit (MYR)	4.51	0.11	-0.74
Pakistan rupee (PKR)	278.65	0.00	-0.10
Philippine peso (PHP)	58.62	0.14	-1.31
Singapore dollar (SGD)	1.37	0.44	-0.26
Sri Lanka rupee (LKR)	294.55	0.00	-0.53
Taipei,China NT dollar (TWD)	33.06	0.21	-0.83
Thai baht (THB)	34.77	0.14	-1.95
Vietnamese dong (VND)	25,390.00	0.04	0.37



NIE = Newly Industrialized Economies



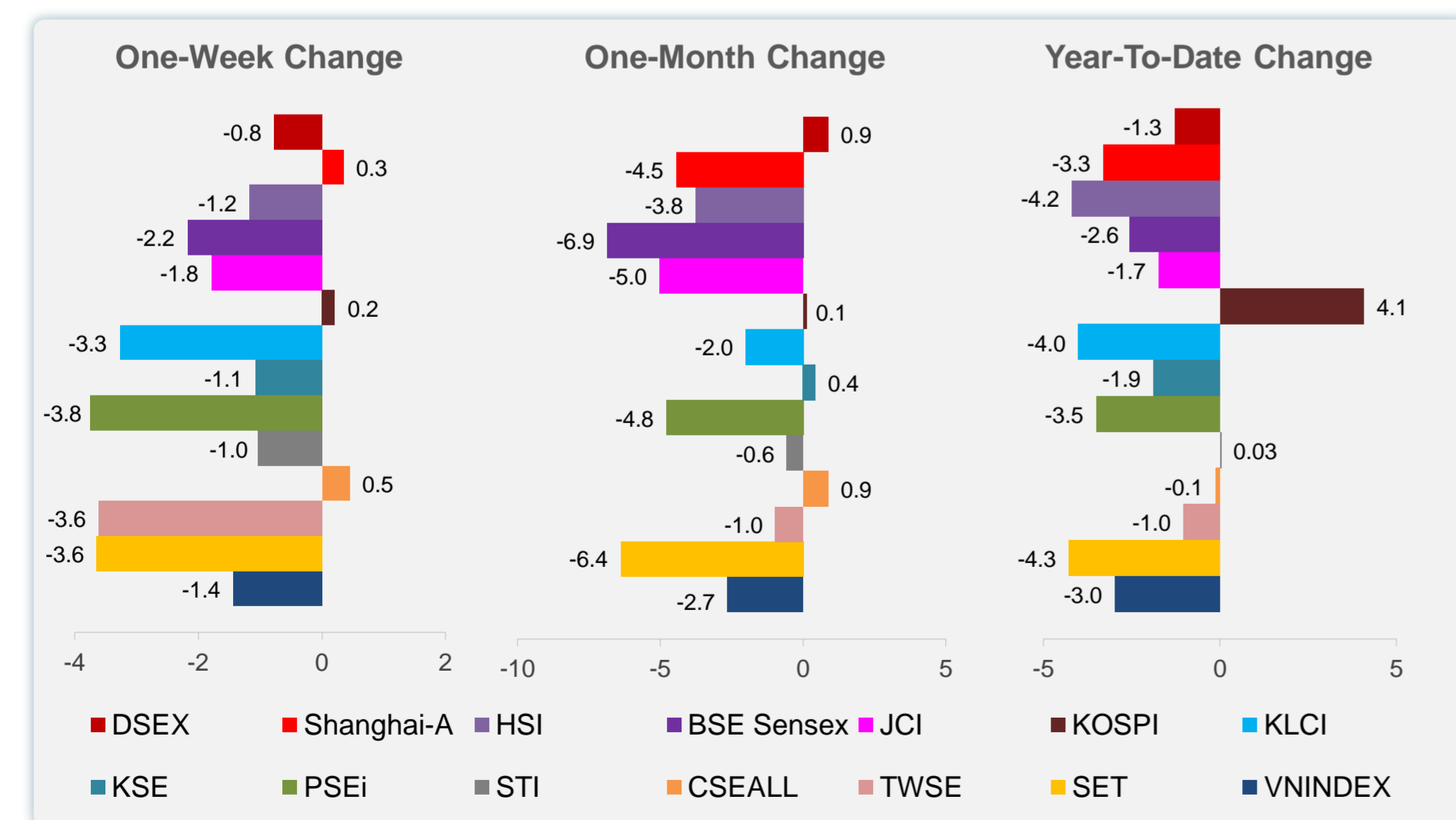
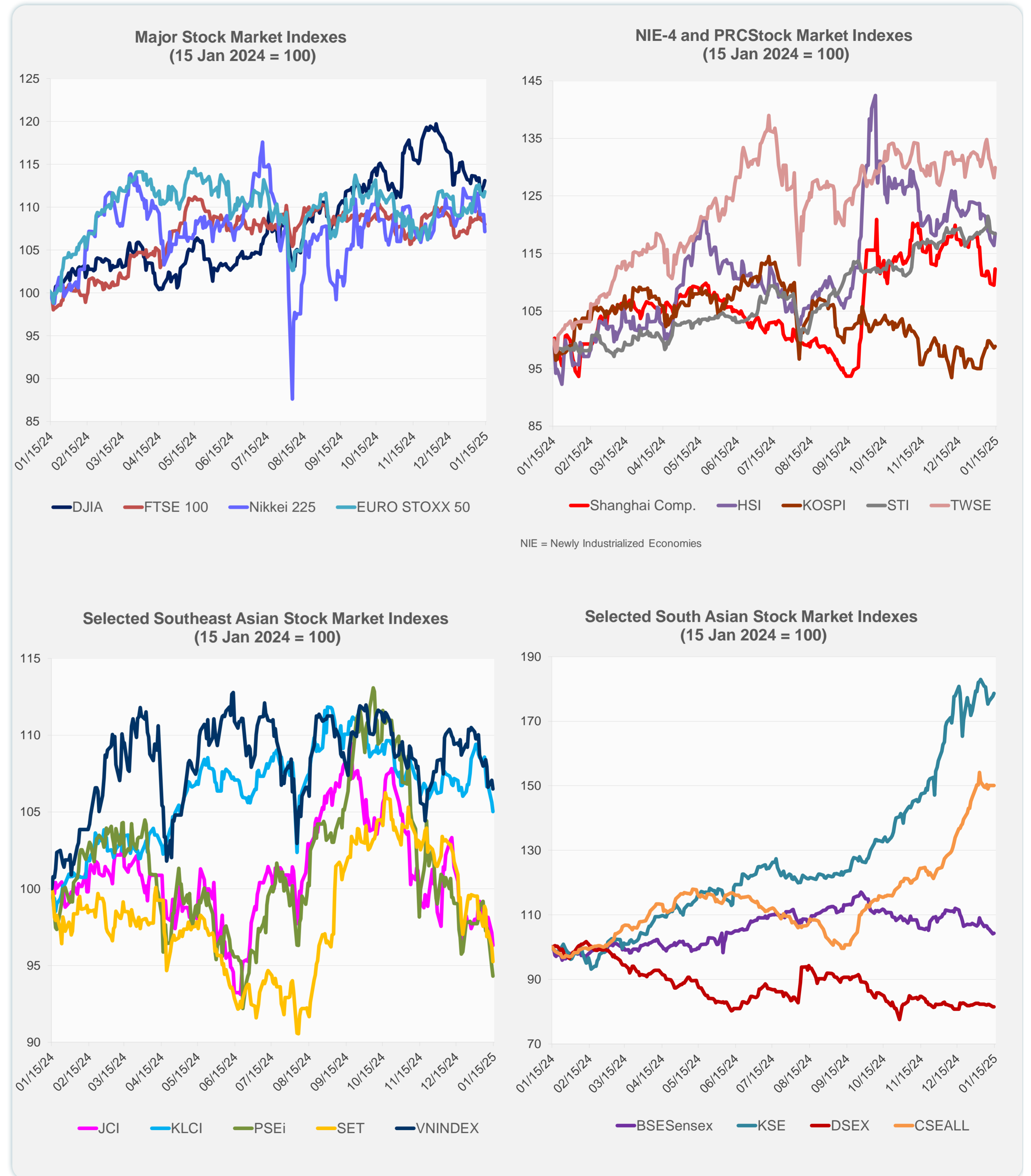
Note: Negative/Decreasing values indicate depreciation of local currency, and positive/increasing values indicate appreciation.  
Source: ADB calculations using data from Haver Analytics.



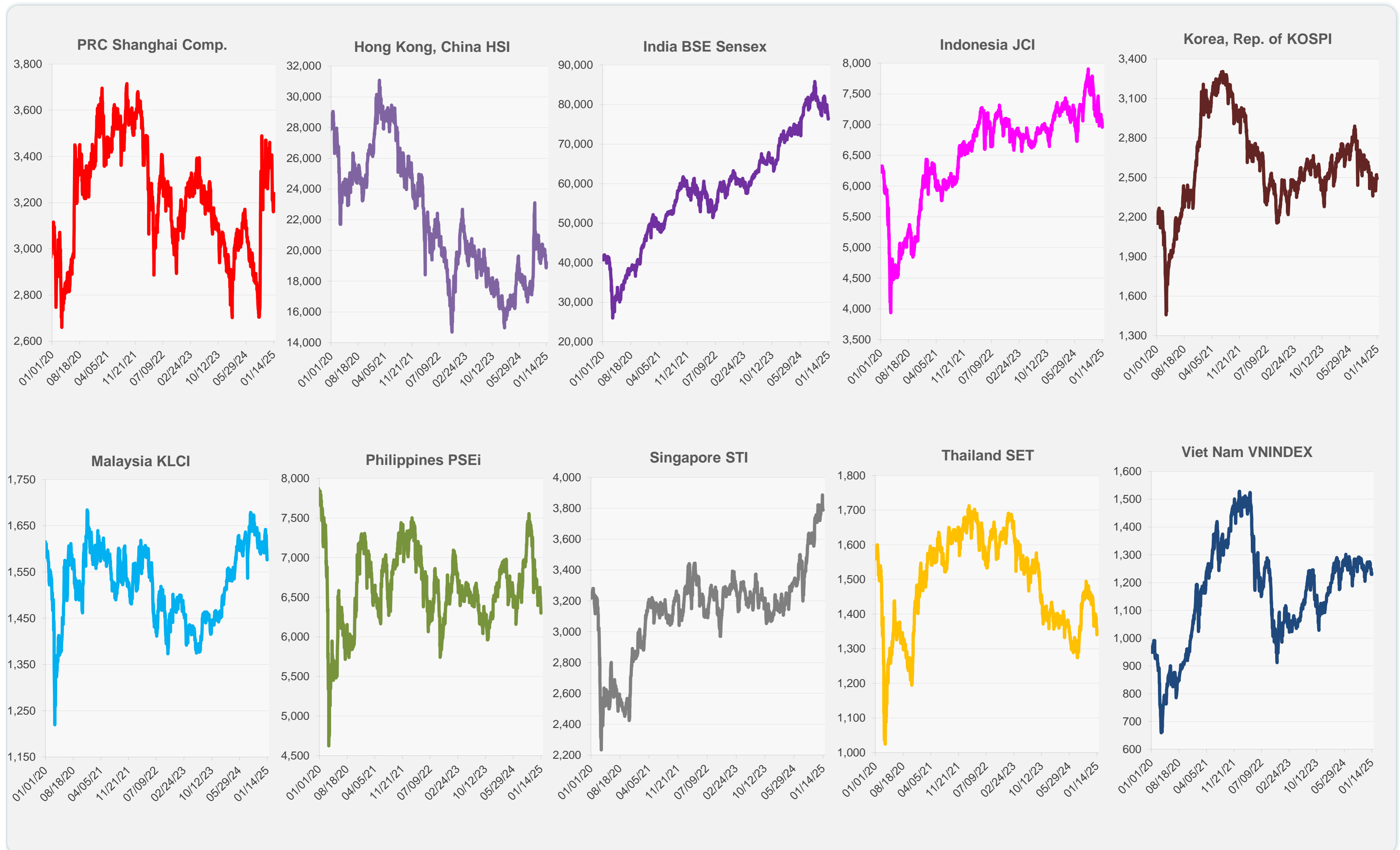
Source: Haver Analytics.

Daily Market Watch  
**STOCK INDEXES**

	Latest Closing	% change from Previous Day	% change from 01-Jan-25
US Dow Jones Ind Avg	42,518.28	0.52	-0.06
US NASDAQ	19,044.39	-0.23	-1.38
US S&P 500	5,842.91	0.11	-0.66
UK FTSE 100	8,201.54	-0.28	0.35
EURO STOXX 50	4,980.47	0.53	1.73
Japan NIKKEI 225	38,474.30	-1.83	-3.56
Bangladesh DSEX	5,150.87	-0.02	-1.29
PRC Shanghai Comp.	3,240.94	2.54	-3.31
Hong Kong, China HSI	19,219.78	1.83	-4.19
India BSE Sensex	76,499.63	0.22	-2.56
Indonesia JCI	6,956.67	-0.86	-1.74
Korea, Rep. of KOSPI	2,497.40	0.31	4.08
Malaysia KLCI	1,576.46	-0.58	-4.01
Pakistan KSE 100	114,804.16	0.50	-1.88
Philippines PSEi	6,299.67	-0.68	-3.51
Singapore STI	3,788.77	-0.08	0.03
Sri Lanka CSEALL	15,926.00	0.00	-0.12
Taipei, China TWSE	22,797.52	1.37	-1.03
Thailand SET	1,340.25	-1.04	-4.28
Viet Nam VNINDEX	1,229.07	-0.53	-2.98



Sources: ADB calculations using data from CEIC Data Company and Haver Analytics.

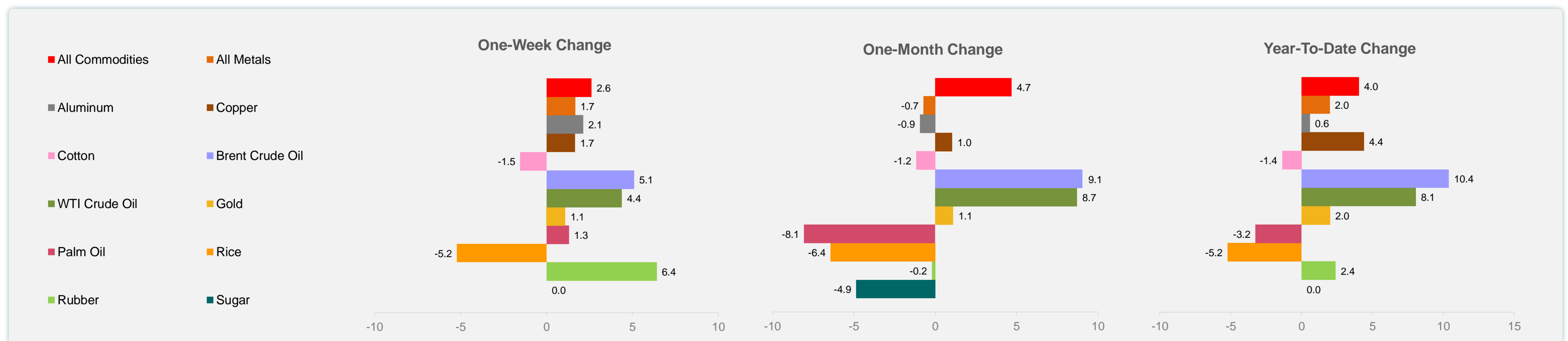
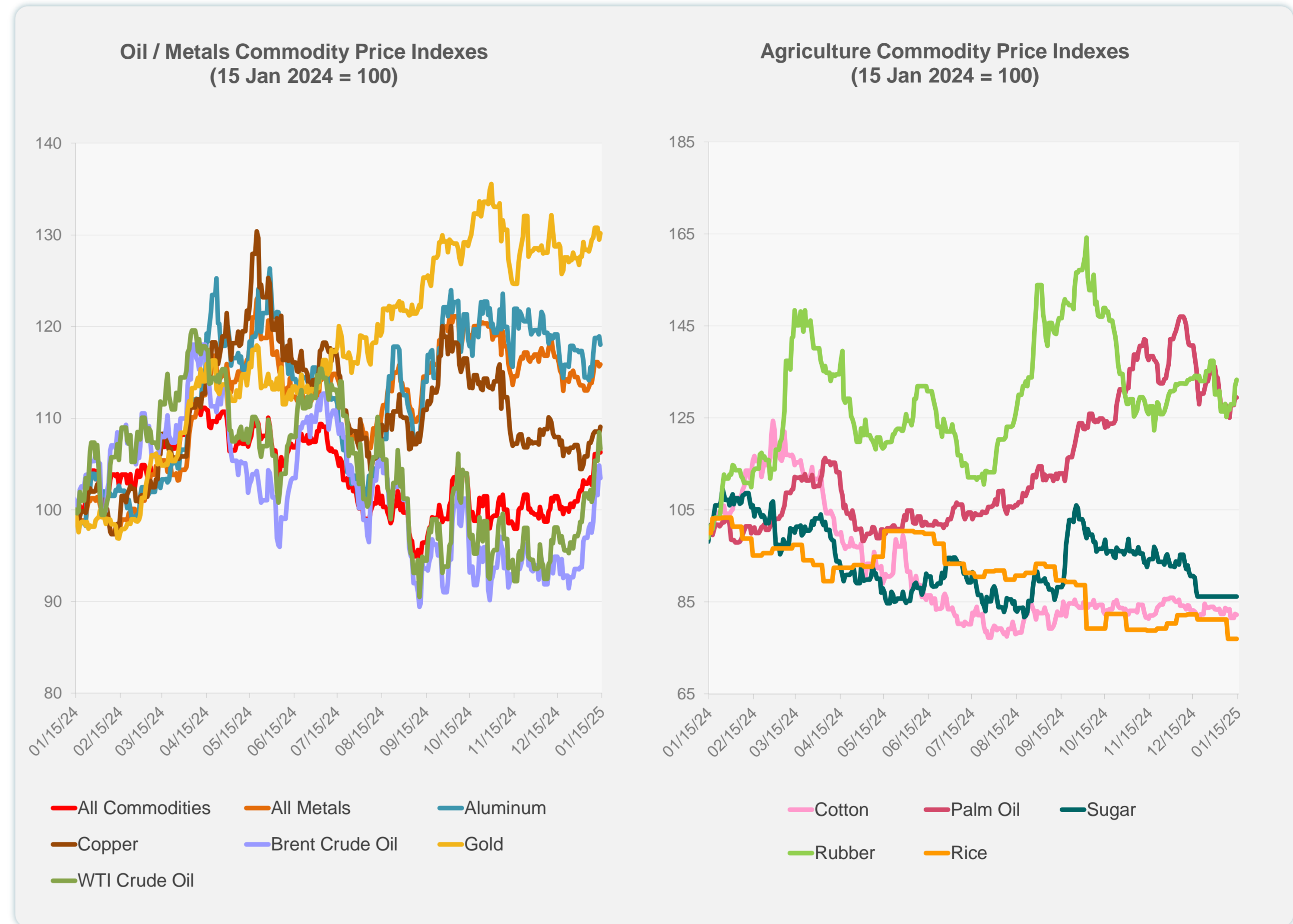


Sources: CEIC Data Company and Haver Analytics.

	Unit	Latest Closing	% change from Previous Day	% change from 01-Jan-25
S&P All Commodities	US\$	571.90	-0.73	4.05
S&P All Metals	US\$	313.50	0.19	1.99
Aluminum	US\$/metric ton	2,541.60	-0.79	0.59
Copper	US\$/metric ton	9,033.70	0.61	4.40
Cotton	US cents/lb	65.00	-0.21	-1.37
Brent Crude Oil	US\$/barrel	81.80	-1.34	10.38
WTI Crude Oil	US\$/barrel	77.50	-1.67	8.06
Gold	US\$/troy oz	2,677.46	0.54	2.02
Palm Oil	US\$/metric tonne	1,064.38	-0.19	-3.25
Rice <sup>1</sup>	US\$/metric ton	509.00	0.00	-5.21
Rubber <sup>2</sup>	US\$/kg	242.50	1.04	2.41
Sugar	US cents/lb	18.59	0.00	0.00

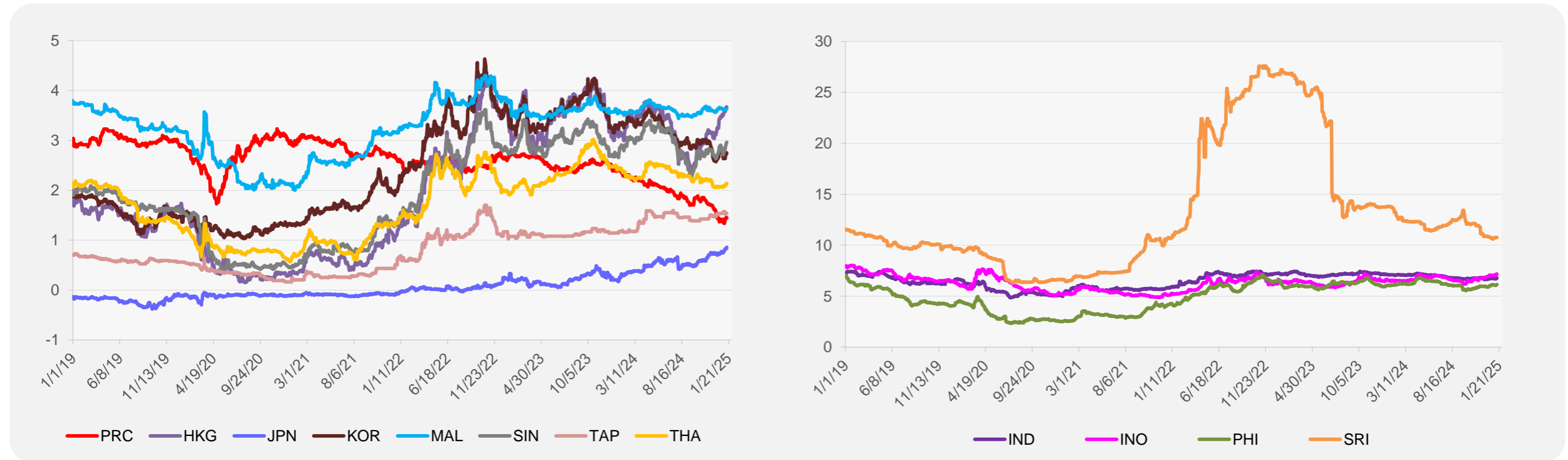
<sup>1</sup> Latest closing price from 8 January 2025.

<sup>2</sup> Singapore Exchange, Ribbed Smoked Sheet Rubber.

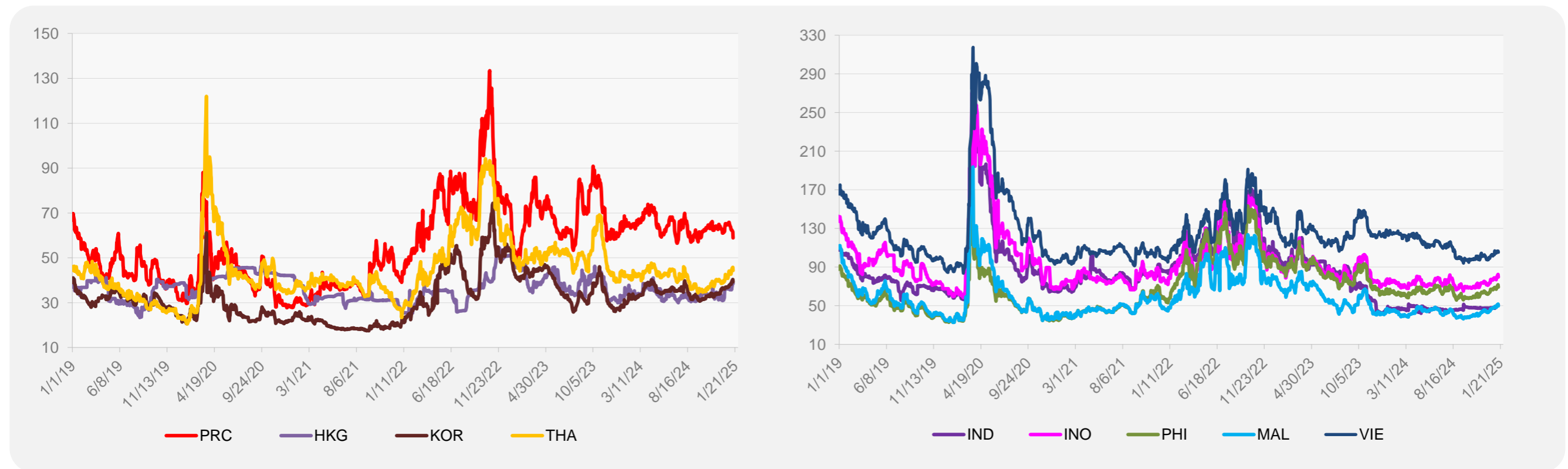


Source: ADB calculations using data from Bloomberg.

### 5-YEAR LOCAL CURRENCY GOVERNMENT BOND YIELDS (%)



### 5-YEAR CREDIT DEFAULT SWAP<sup>1</sup>



<sup>1</sup> In USD and based on sovereign bonds.  
Source: ADB calculations using data from Bloomberg.